

Getting started with Silver notebooks

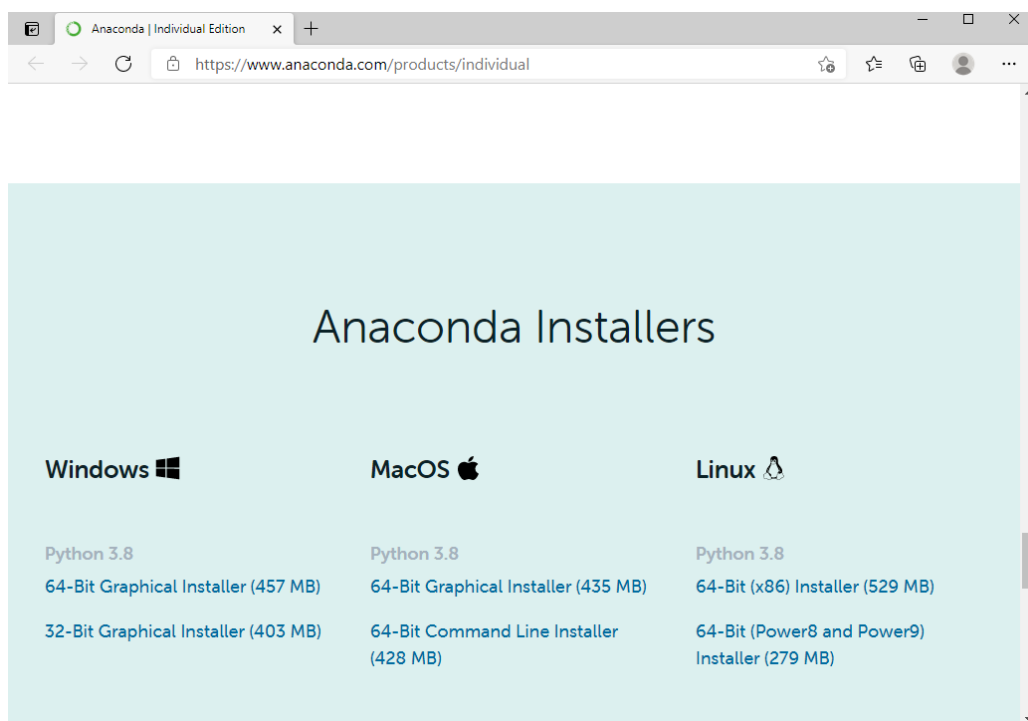
You will need to install *Jupyter Notebook* to read and run the Silver material. We recommend creating and using a separate virtual environment (named “QSilver”) to use these notebooks. If you are an expert, you can skip some or all of the sections below.

Installation of *Jupyter Notebook*

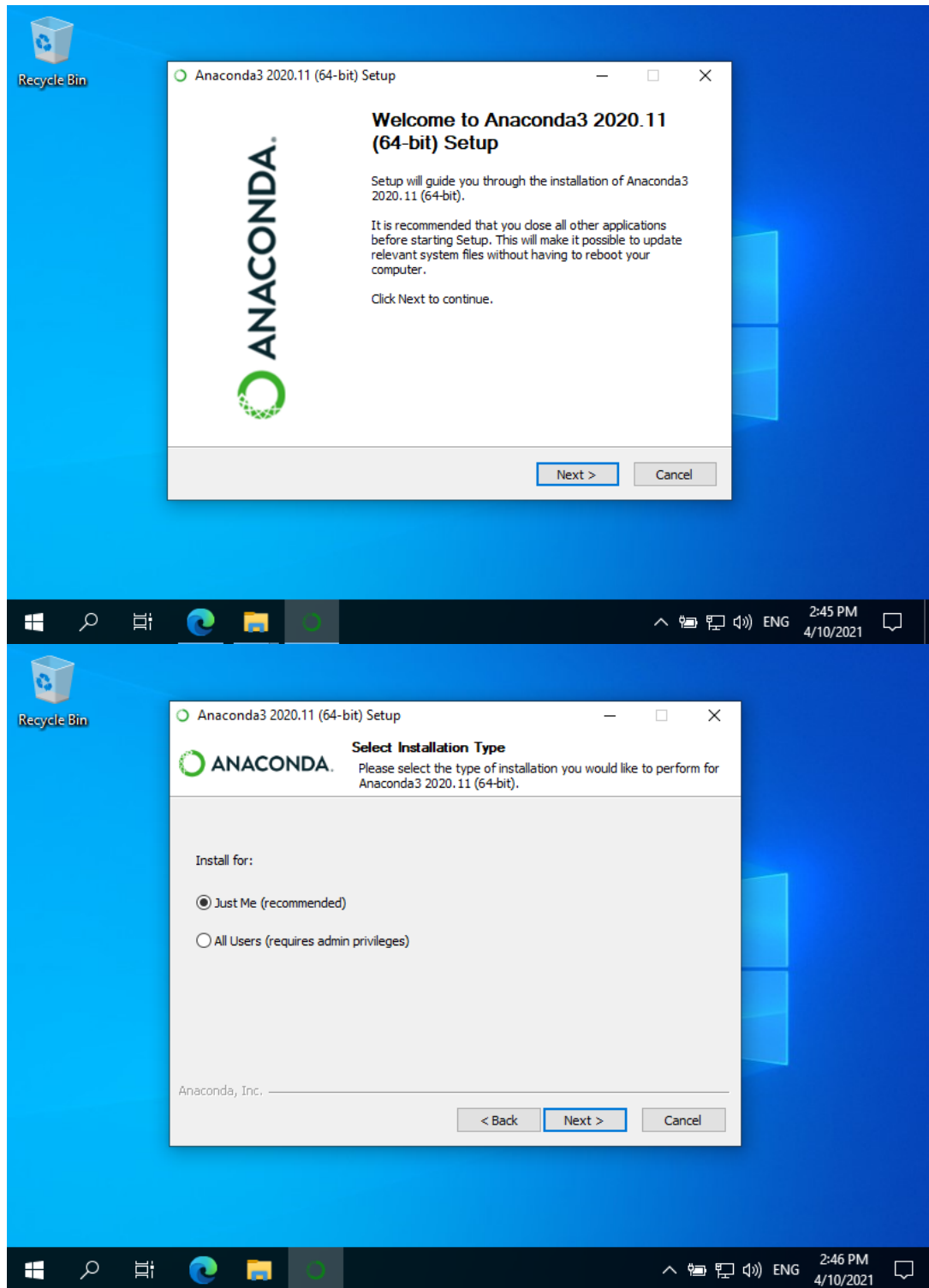
We recommend using *Anaconda* to install *Jupyter Notebook*.

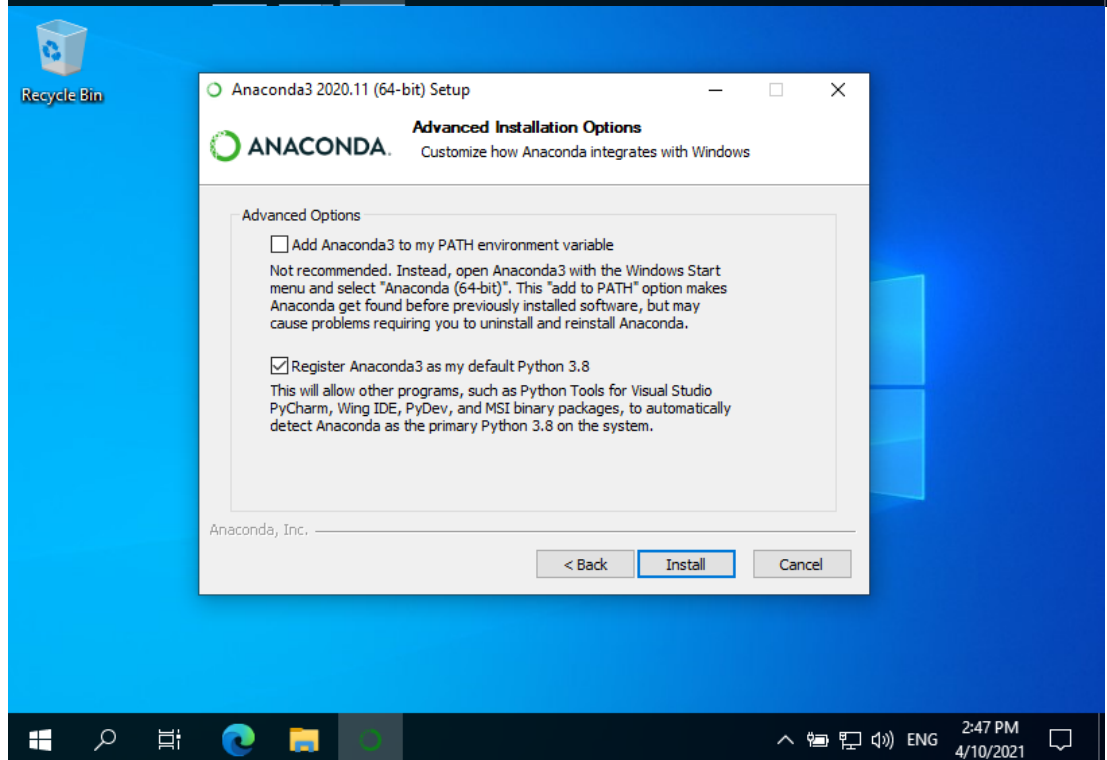
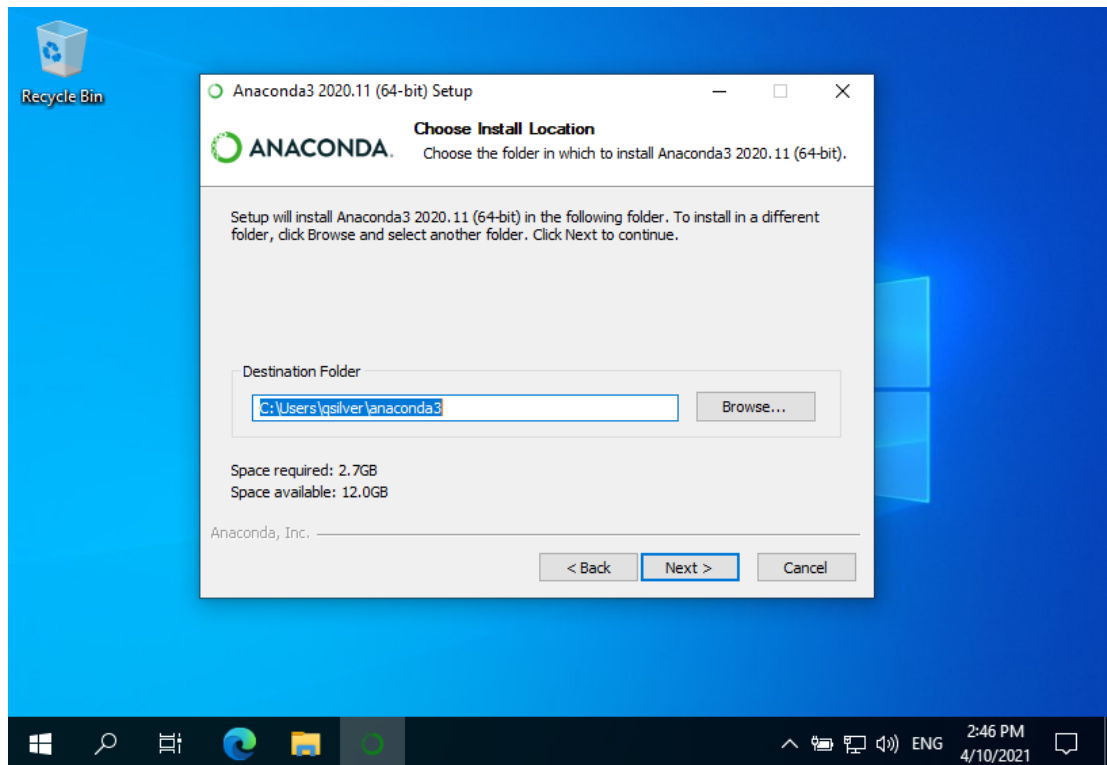
Installing *Anaconda*

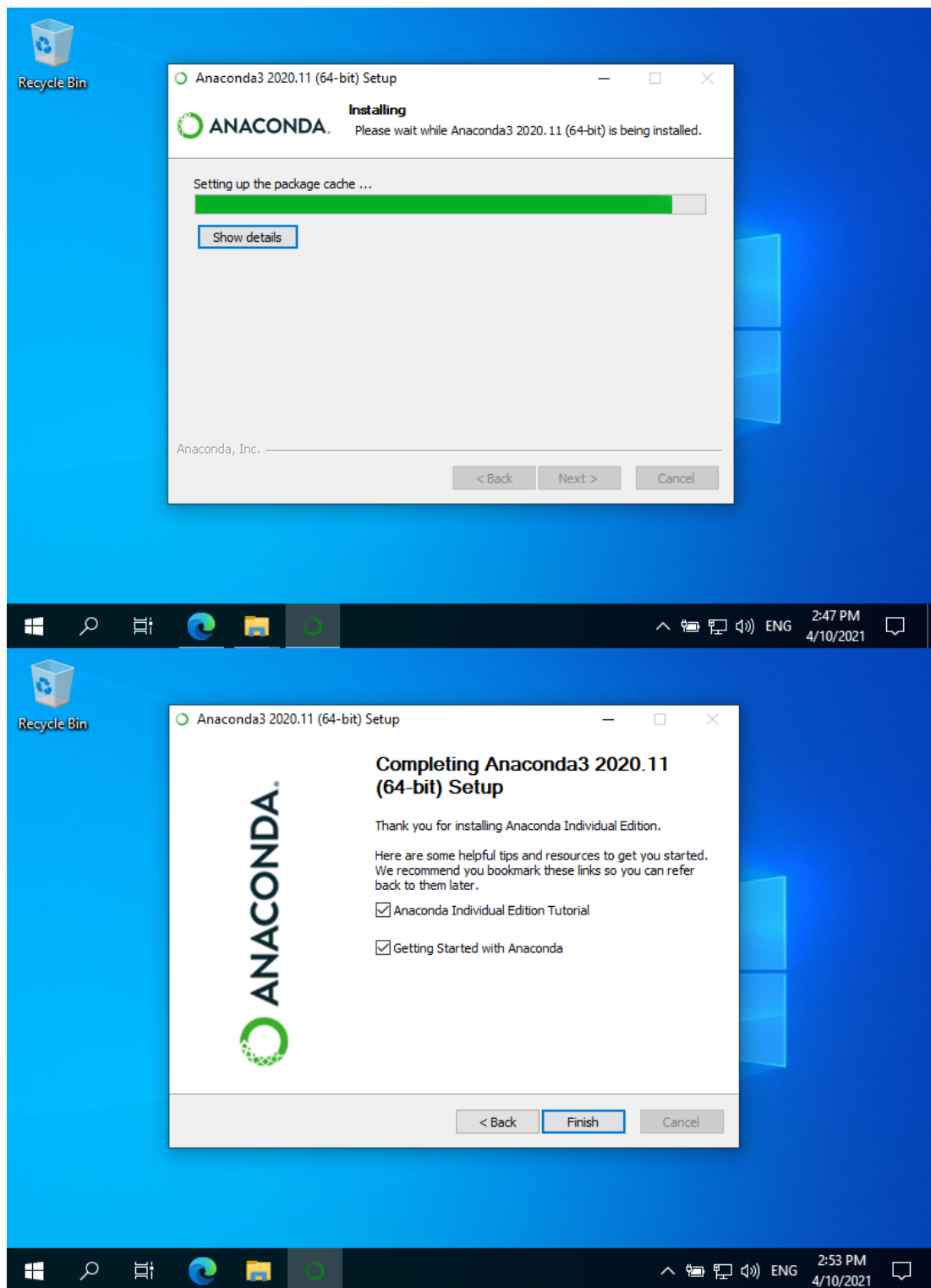
1. Anaconda is available for multiple platforms. [You can download it here](https://www.anaconda.com/products/individual).



2. You can use the default installation settings. On Windows they'll look like this:

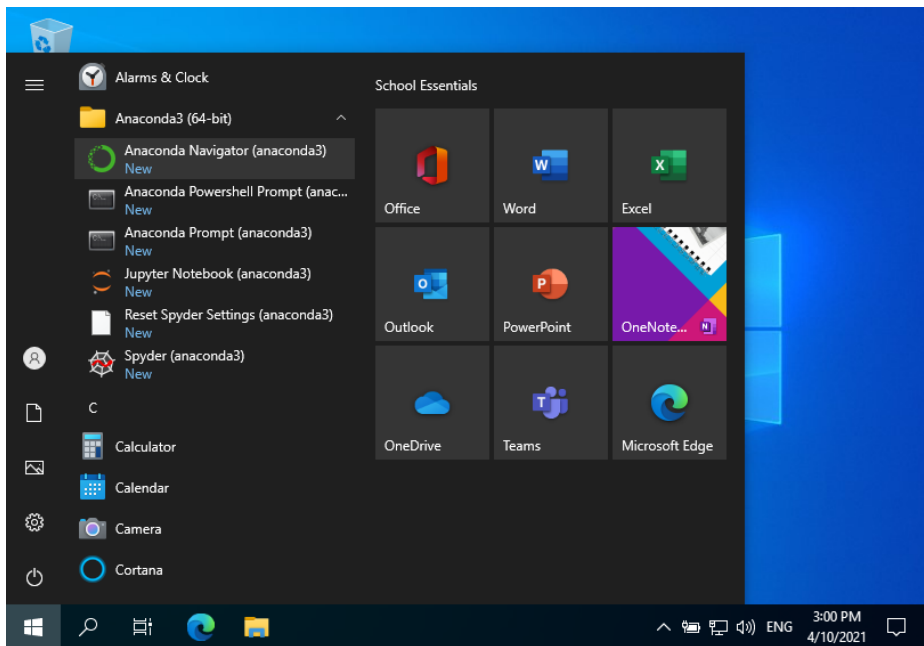




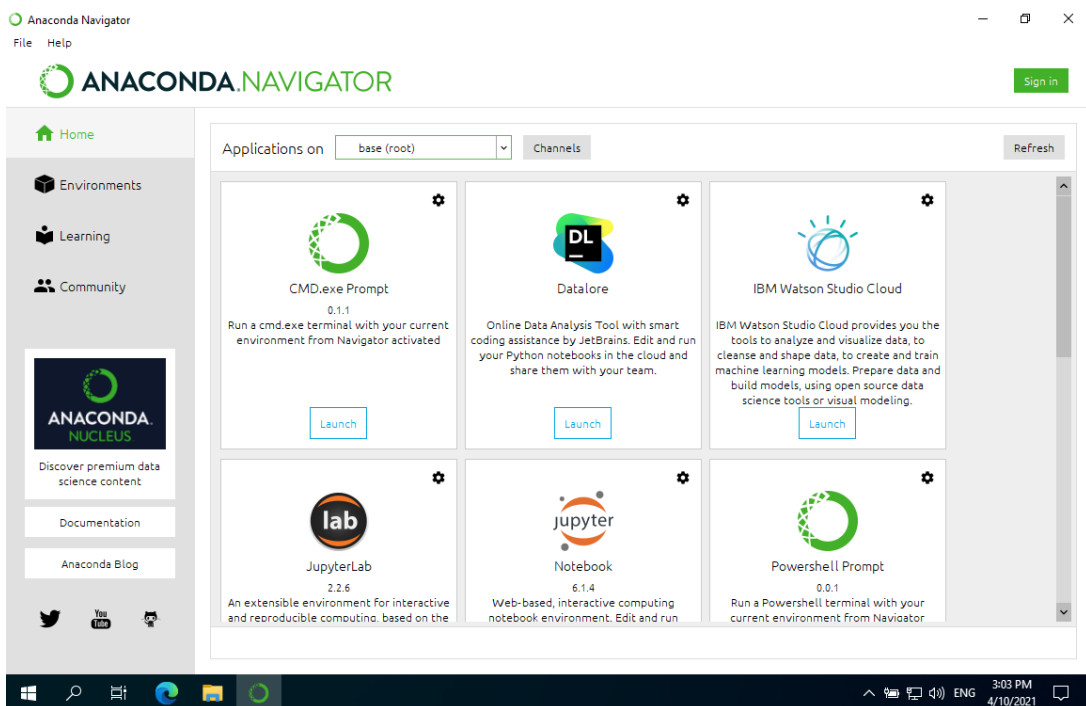


Creating the virtual environment “QSilver”

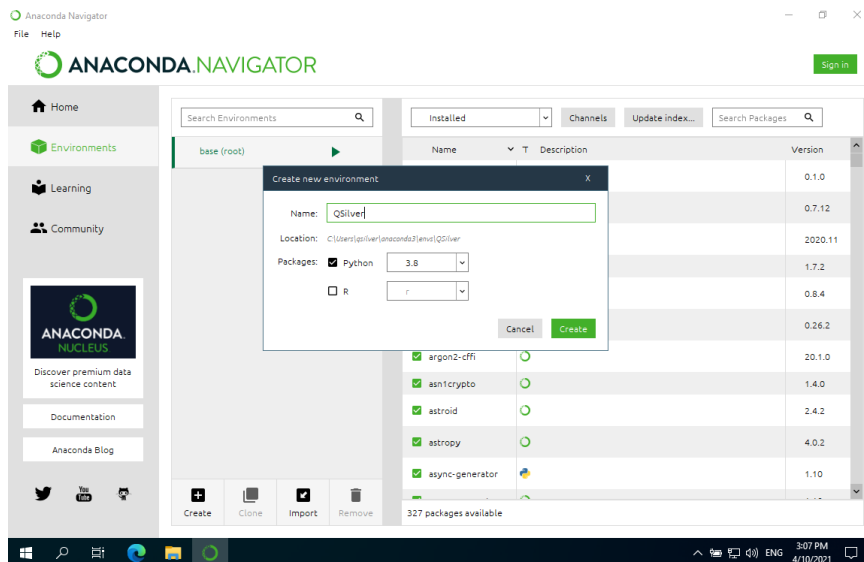
1. Start the *Anaconda Navigator*. In Windows you can find it in the Start Menu:



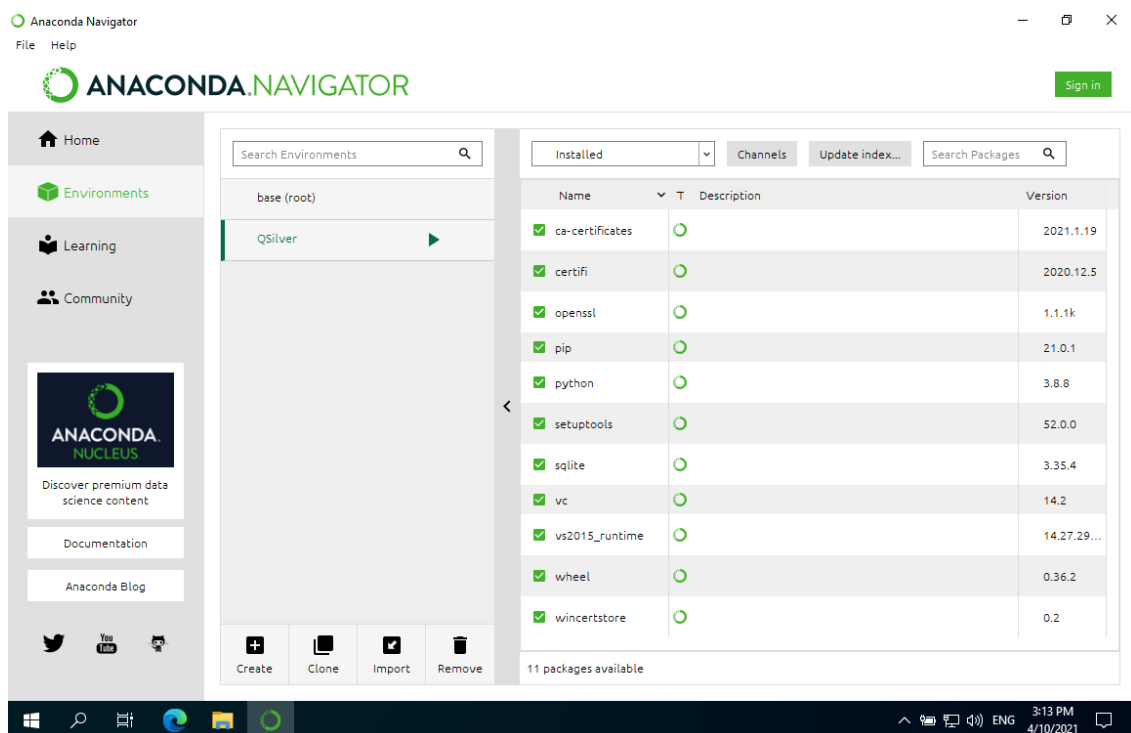
2. Once started, *Anaconda Navigator* will show its *Home* tab.



3. Select the *Environments* tab on the left. And click on the *Create* button on the bottom. Fill in "QSilver" in the environment name and click *Create*.

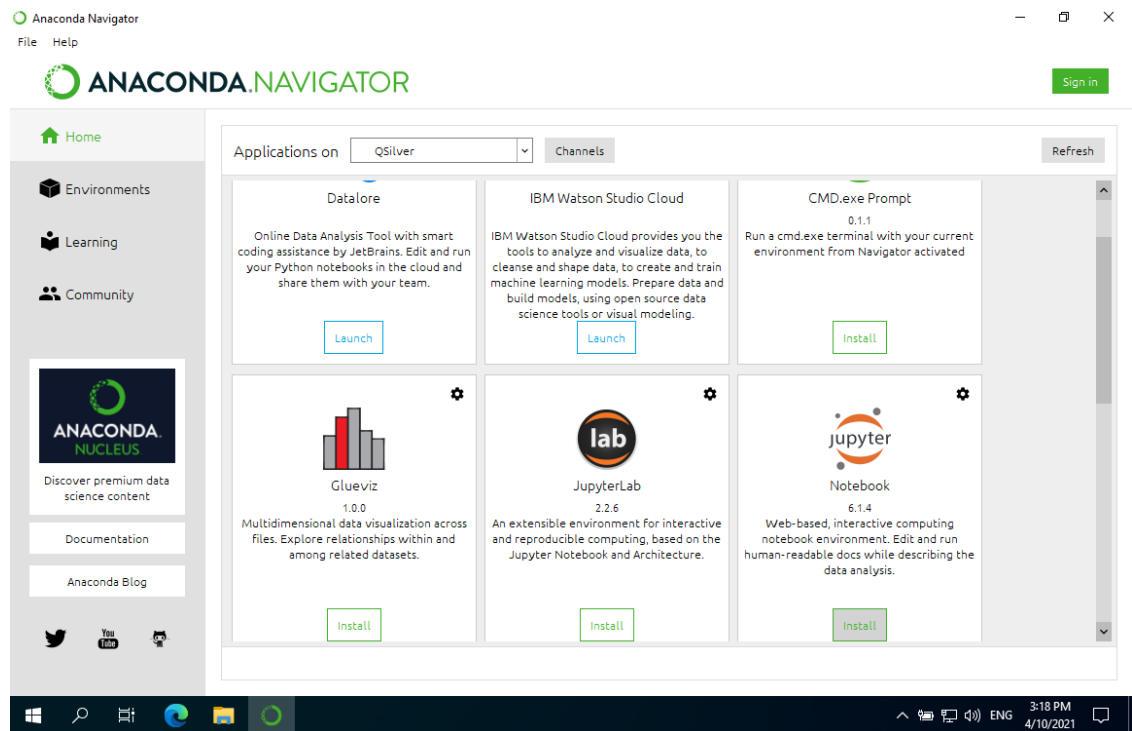


It'll take a while until the creation is completed. Once ready, you'll see a new environment "QSilver" in the middle pane of *Anaconda Navigator*:



Installing *Jupyter Notebook* in the “QSilver” environment

1. Go back to the *Home* tab. Make sure that “QSilver” is selected in the drop-down menu where it says “Applications on.” If everything looks OK, click the *Install* button on the *Jupyter Notebook* card.

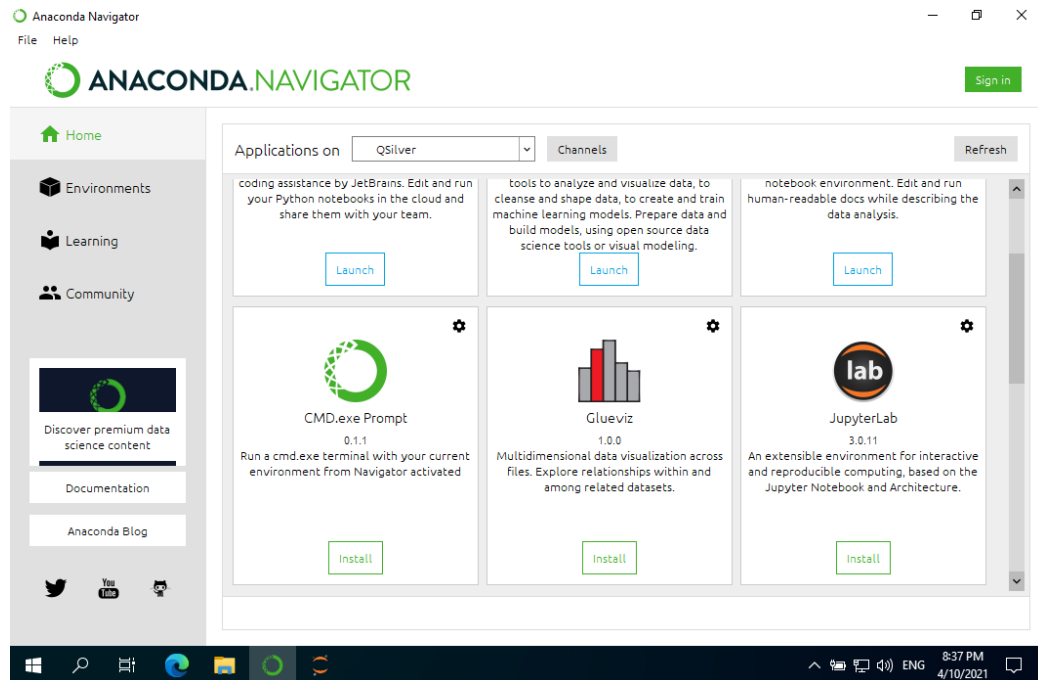


It will take a while to complete the installation.

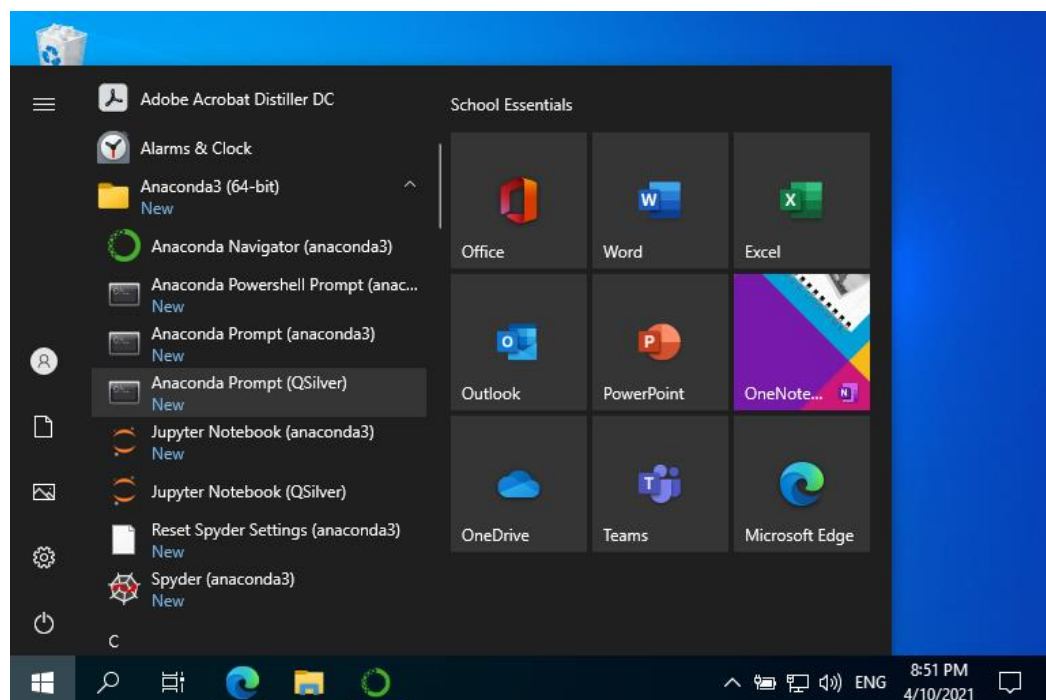
Enabling the *Anaconda Terminal* in the “QSilver” environment (optional)

You should be able to install all dependencies and use the *Silver* materials from *Jupyter Notebook* alone, however, you might find it useful to have means to manage the “QSilver” virtual environment from the command line.

1. Select the *Home* tab, make sure that the “QSilver” environment is selected in the drop-down menu on the top. Find the card “*CMD.exe Prompt*” and click “*Install*.”



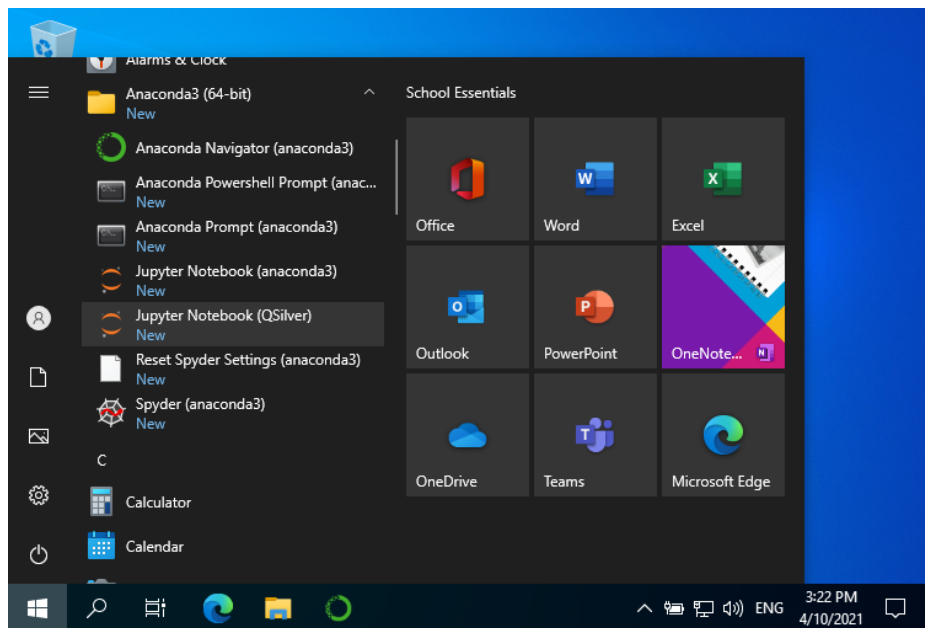
After this a new menu item, *Anaconda Prompt (QSilver)* will be available in the *Anaconda3* folder in the Start Menu:



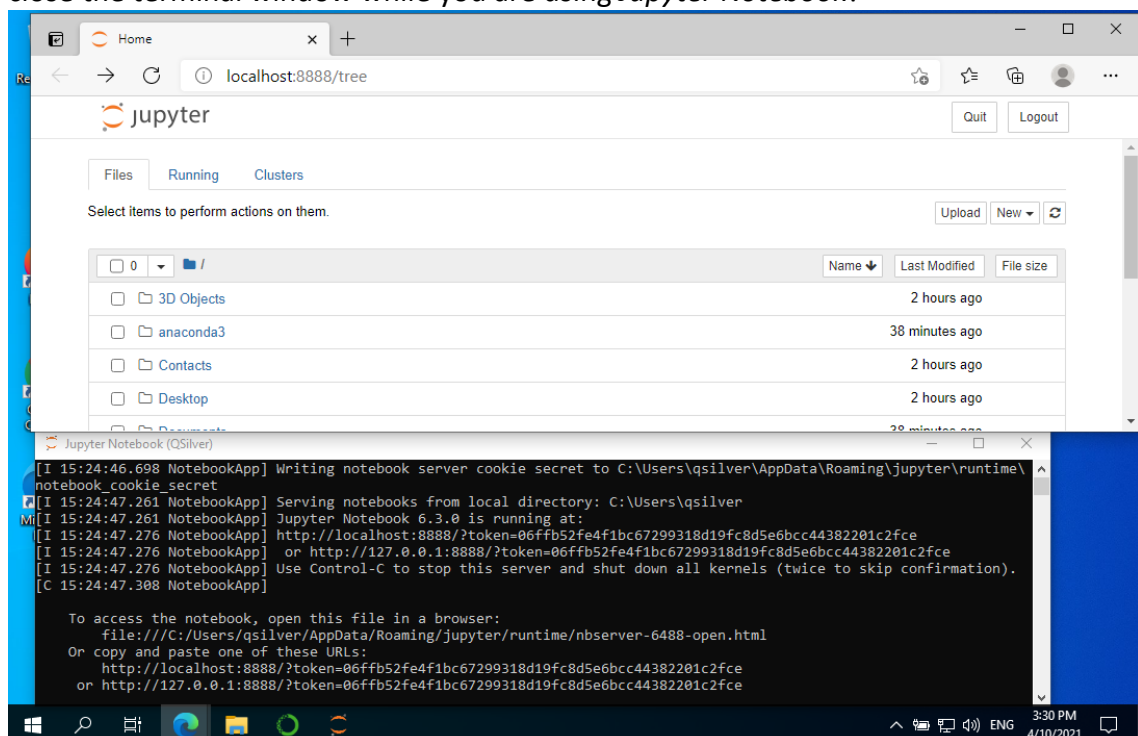
Starting Jupyter Notebook

We recommend starting Jupyter Notebook in a separate virtual environment named “QSilver.”

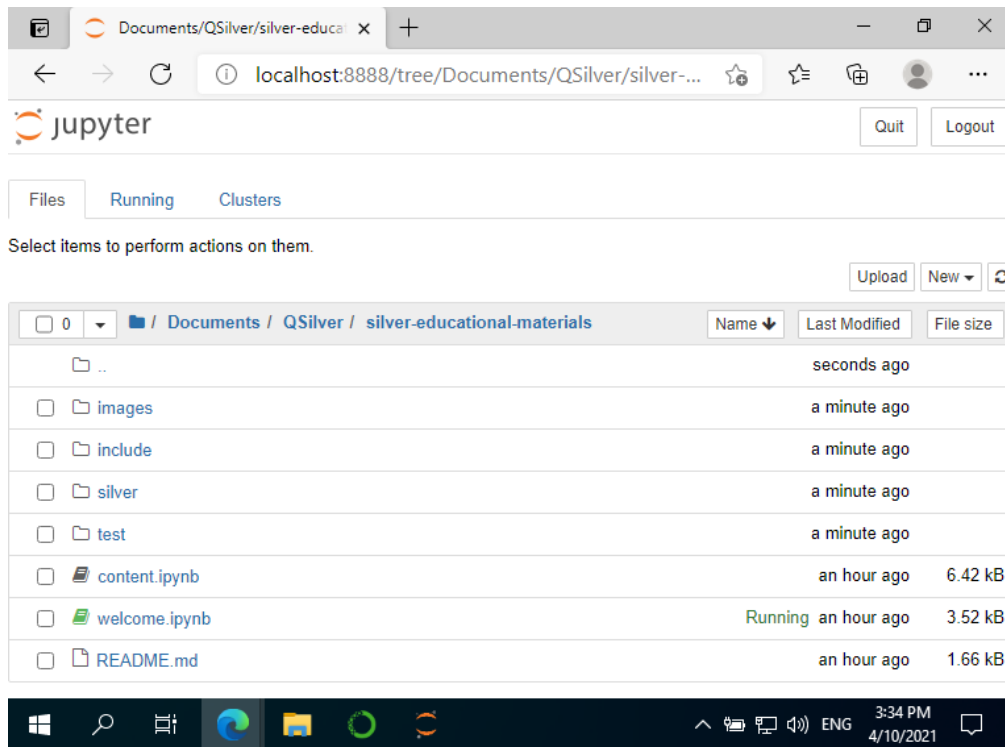
1. If you followed the instructions above, a new item “Jupyter Notebook (QSilver)” will be available in Start Menu under the *Anaconda3* folder:



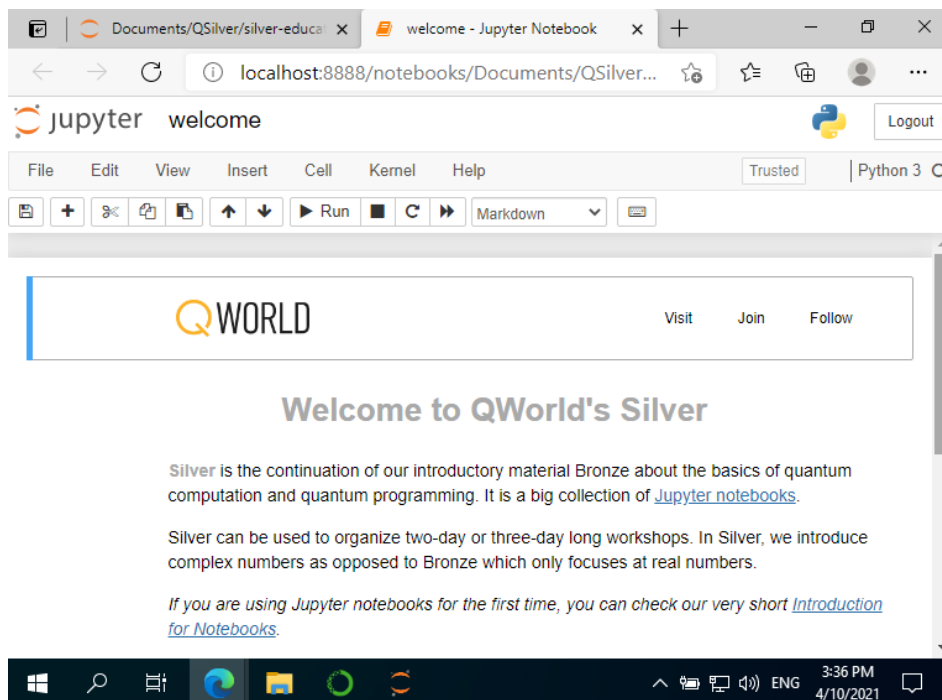
2. Once you click in this item, the *Jupyter Notebook* server will be running in a terminal window, and your browser will be instructed to open the graphical interface. Do not close the terminal window while you are using *Jupyter Notebook*!



3. Navigate to the folder where you have downloaded the Silver materials to:



4. Open the file "welcome.ipynb"



Now you should be ready to proceed with installing the required python libraries!